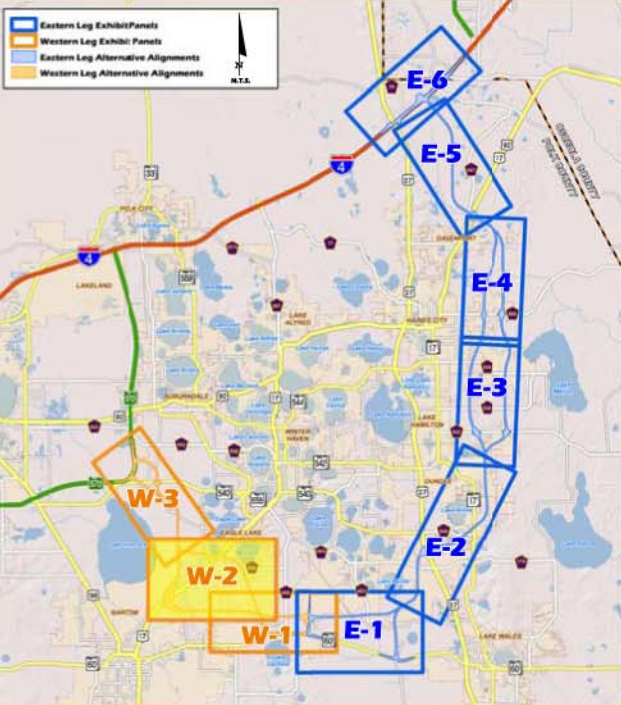
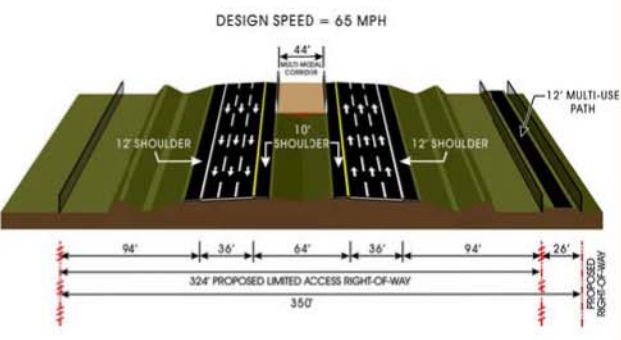


Central Polk Parkway PD&E Study

PANEL LOCATION KEY



PROPOSED TYPICAL SECTION



LEGEND

- | | |
|--|--|
| --- COUNTY LINE | --- PROPOSED BRIDGE |
| --- CITY LIMITS | --- PROPOSED MULTI-USE PATH |
| --- PARCEL BOUNDARY | --- WIDENING/CONSTRUCTION BY OTHERS |
| --- PROPOSED RIGHT-OF-WAY | ●● POTENTIAL RELOCATION
B - BUSINESS, R - RESIDENCE |
| --- PROPOSED LIMITED ACCESS RIGHT-OF-WAY | ▲ POTENTIAL CONTAMINATION SITE |
| [E201] ALTERNATIVE ALIGNMENT LINKS | --- EXISTING SURFACE WATER |
| [E101] RECOMMENDED CORRIDOR LINKS | --- EXISTING WETLAND |
| --- PROPOSED ROADWAY | --- CONSERVATION LANDS |

PANEL W-2

TO BARTOW NORTHERN CONNECTOR